

LANLinker BRI

LANLinker BRI is a complete solution for small to medium-size businesses, small or branch offices, and telecommuters who need to connect a Local Area Network (LAN) to a corporate network or the Internet. LANLinker provides network connectivity with high functionality like no other router product can. Unlike competitive products where you pay extra for key features, LANLinker comes complete in one, ready-to-use, low-cost unit with an exceptional list of features, including IP, IPX and AppleTalk routing; an analog device port; remote management and configuration; compression; integrated NT-1 (U version); security software and GUI management software. No additional external products are needed to get complete router functionality. And LANLinker can be upgraded with a simple Flash ROM software download.

Branch Office/Small Office

Branch offices or small businesses need to get access to information no matter where the information resides. LANLinker connects a LAN to other computers on remote networks. Once connected, users can communicate with remote computers as if they were local. Remote users can move data back and forth quickly and access any program or file they would ordinarily use on the network.

As a corporate branch office solution or a gateway to the Internet, LANLinker is easy to install, configure and use. LANLinker BRI can be used as a compact standalone router that provides network routing functions over ISDN Basic Rate Interface (BRI) from a single LAN port and a single wide area network (WAN) port. LANLinker allows for easy remote configuration and management by way of the SNMP-based Access Manager, U.S. Robotics' remote network management software. Telnet can also be used.

Home Office/Telecommuter

LANLinker provides quick and easy access to the Internet as well as to a corporate network. Using the IP protocol, network administrators can remotely configure and manage LANLinker for customers. Or, users can install and configure LANLinker with one of its easy-to-use configuration methods, thereby allowing users to choose their preferred configuration method based on their expertise.

Configuration methods:

- Auto-configuration wizard.
- Quick setup within the command-line interface (CLI).
- Command-line interface.

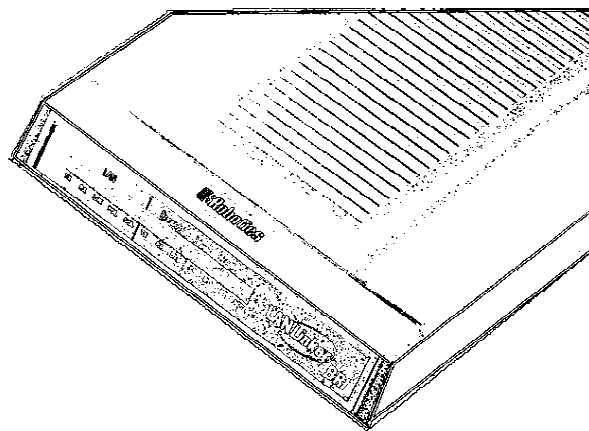
For telecommuters, LANLinker allows simultaneous connections to the Internet and the corporate network. LANLinker can support simultaneous multi-protocol routing of IP, IPX, and AppleTalk, and bridging of other protocols to different locations.

APPLICATIONS

Remote office connectivity. LANLinker BRI provides network connectivity from a remote office LAN to a corporate network or to the Internet. LANLinker allows one or more remote computers attached to a LAN to gain access to information maintained on a geographically separate LAN or stored at a central corporate site. (Figure 1)

Internet access. For many companies, connectivity to Internet services has become a critical business requirement. LANLinker is an inexpensive and complete solution for companies to link their LANs to the Internet, creating a communications path to customers and suppliers. Additionally, Internet access can enable users to better track competitors.

LANLINKER



Enhanced Internet service provider (ISP) service offering. Designed to be remotely configured and quickly managed, ISPs wishing to add value for their customers can use LANLinker to provide a complete turnkey Internet access solution. ISPs can remotely manage and support LANLinker for their customers.

Power-user LAN. LANLinker connects high-end single users from their homes or a single person office to a corporate LAN or the Internet. The broad functionality of LANLinker is available to PC users as well as Macintosh and UNIX users because LANLinker supports the AppleTalk protocol for Macs in addition to IP and IPX protocols. (Figure 2).

Figure 1
Remote office on a corporate network

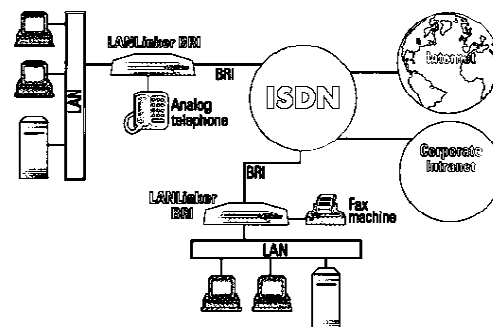
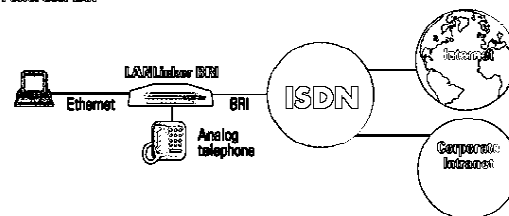


Figure 2
Power User LAN



FEATURES

Most cost-effective LAN interconnect solution available today

- All the functionality you need is provided at one low cost.
- Analog device port allows users to connect standard analog telephones, faxes or modems utilizing the same ISDN connection.
- Tariff management features save money on toll charges from the telephone company, keeping the ISDN line active only when necessary.
- Network spoofing capabilities for optimized connectivity limit the traffic over the links, including: limiting routing table broadcasts, spoofing local Service Advertising Protocol (SAP) broadcasts, and programmable filtering of specific SAP types. These features save on usage charges, making connections only when required.
- Dial on demand brings up connections when they are needed and tears them down when traffic is no longer needed.

Easy to install and configure

- The auto-configuration wizard enables quick and easy installation and configuration of LANLinker. Users respond to a few simple, Windows-based queries, and the wizard automatically configures to their specific needs.
- Quick setup in the command-line interface will allow a more advanced user to configure LANLinker quickly.
- Command-line management allows configuration, installation and utilization of sophisticated routing functionality via the console interface or through the use of standard Telnet.
- SNMP-based GUI Network Management software, Access Manager, allows simple changes to the configuration.

Multiple protocol support

- Simultaneous routing of IP, IPX and AppleTalk.
- Transparent bridging of other protocols.

High performance

- Channel aggregation capabilities increase the available bandwidth utilizing dynamic bandwidth management and Multilink PPP.
- Dynamic bandwidth allocation automatically increases bandwidth as needed and reduces bandwidth when there's less traffic being sent.
- Multilink PPP combines the two B-channels of an ISDN BRI line into a single 128 Kbps channel. Even higher rates are possible when combined with compression. U.S. Robotics performance testing indicates compression techniques can increase the link speed by over 400%.
- PPP Compression algorithms can be automatically negotiated with other devices. STAC, Microsoft, and Ascend algorithms are supported.

Complete feature-rich functionality with no external products required

- Remote configuration allows corporate network administrators and ISPs to remotely manage and support LANLinker for their customers.
- SNMP-based management allows access to the LANLinker via the LAN or any of its WAN connection points for easy remote or local management. LANLinker Access Manager (shipped standard with LANLinker) supports SNMP-based management as well as performance monitoring, configuration management, and remote downloads of software upgrades.
- HTML-based monitoring allows administrators to monitor select status and statistics of the LANLinker via the LAN or WAN connection using any HTML-based web browser.
- Security features include user profiles with PAP and CHAP authentication for PPP, external RADIUS authentication server support, call-back connections, packet filtering to limit access, and Telnet password support.
- User authentication and accounting includes FLASH memory with directory of users, passwords, service and configuration information, and external RADIUS authentication server. This feature provides additional levels of security offering authentication authorization and accounting of the connections.
- Includes integrated NT-1 (U version).
- Switchable Ethernet port to support connection to LAN hub or individual PC.
- Interoperability via RFC-1490 over Frame Relay and via PPP over dedicated 56 Kbps lines

TECHNICAL INFORMATION

Ethernet Interface

Unshielded twisted pair (10Base-T)
10 Mbps Ethernet
Switchable TX/RX pairs for TO PC or TO HUB operation

Analog Device Port (ADP)

RJ-11 interface/connector
Internal ring generator
Ringer equivalence of 3

ISDN "U" or "S/T" Interface

'B' channels treated as multiple or single TE1 as capable by standards
Integrated NT-1 function (U interface model)
ISDN switch compatibility

Network Protocol Support

Wide Area Protocols: PPP, Multilink PPP (RFC1717) encapsulation, IPXWAN, IP, IPX, and AppleTalk routing
Transparent bridging with spanning tree 802.1d
Dynamic Routing Protocols: IP RIP1/2, IPX RIP, AppleTalk RTMP
IP Stack: IP, UDP, TCP, SNMP, TELNET, TFTP, ICMP, ARP

Console Interface

Female DB-9 asynchronous serial interface, 9-pin to 25-pin adapter included
Serves as configuration console

LED Indicators

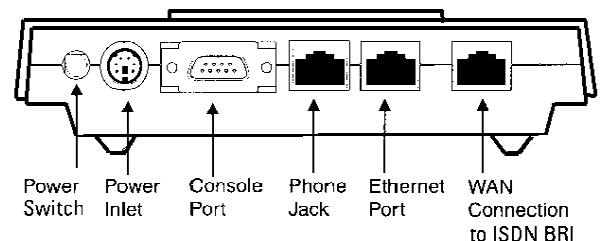
Twelve LED indicators for troubleshooting and status information

Regulatory/Agency Approvals

UL, CUL, FCC Part 15 Class B, FCC Part 68

LANLinker Model Numbers/Part Numbers

SKU#	Description
001251	LANLinker BRI S/T (separate NT-1 required)
001252	LANLinker BRI U (integrated NT-1)



Warranty

One-year limited hardware warranty; factory repair or replacement. 90-day free software support and upgrades.

Services

U.S. Robotics' customers are backed by a full range of technical support services including toll-free phone support, product specification assistance, installation services, training programs, electronic information services, plus a variety of repair and service options. For more information on any of the U.S. Robotics service and support programs, call 1-800-USR-CORP.

United States Contacts

For Corporate Accounts, Internet Service Providers and Corporate Resellers

U.S. Robotics Network Systems Division

1800 West Central
Mt. Prospect, IL 60056
Phone: 800.USR.CORP
Fax: 847.933.5800

For Federal, State or Local Government Agencies or Resellers U.S. Robotics Government Systems Group

2070 Chain Bridge Road
Suite 100
Vienna, VA 22182
Phone: 800.GOV.T.399
Fax: 703.848.7888

Fax On Demand

800.762.6163
847.676.8536

BBS 847.982.5092

Web Site Address

www.usr.com/business

Canadian Contact

1100 Burloak Drive, 5th Floor
Burlington, Ontario L7R 6B2
Phone: 905.336.8168
Fax: 905.336.7380

European Contacts

U.S. Robotics, SARL
Cityparc, 3 rue Lavoisier
F-59650 Villeneuve d'Ascq
Phone: 33.20.19.19.39
Fax: 33.20.91.99.27
Technical Support: 33.20.19.19.59

France

U.S. Robotics Systems SARL
Tour Kupka A
18, rue Hoche
92800 Paris-La-Défense
Phone: 33.141.97.46.00
Fax: 33.141.07.03.03

United Kingdom

BBS 44.1734.692200

U.S. Robotics, Limited
Network Systems Division
Arundell House
1 Farm Yard
Windsor, Berkshire SL4 1QL
England
Phone: 44.1753.751200
Fax: 44.1753.840777

Germany

U.S. Robotics Deutschland GmbH
Münchner Straße 12
84774 Unterföhring
Phone: 49.0.89.99220.0
Fax: 49.0.89.9577220



Manufactured in the U.S.A.

U.S. Robotics[®]
The Intelligent Choice in Information Access

U.S. Robotics and the U.S. Robotics logo are registered trademarks of U.S. Robotics. All products and technologies mentioned are trademarks or registered trademarks of their respective manufacturers.